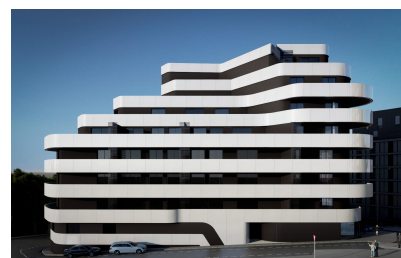
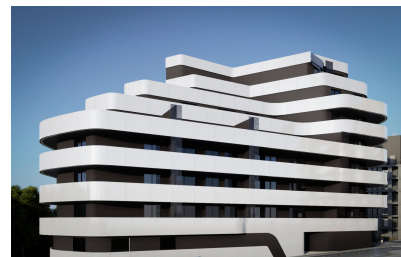
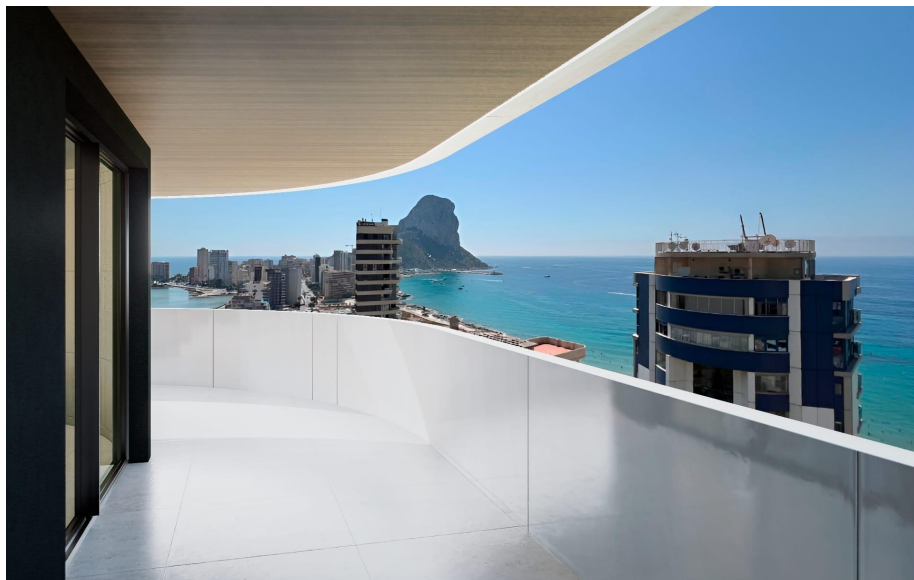


1 bedroom Penthouse in Calpe

Ref: RDN8715

413,470



Property type : Penthouse

Location : Calpe

Bedrooms : 1

Bathrooms : 1

Swimming pool : Communal

Views : Sea view

Parking : Private parking

House area : 112 m²

Terraces area : 45 m²

Beach : 400 m

- ✓ Elevator
- ✓ Close to beach
- ✓ Jacuzzi
- ✓ Airconditioning (cool/heat)

Luxury Apartments in Calpe just 3 Minutes from the Beach Exclusive Homes in the Heart of the Costa Blanca Discover a new way of living on the Costa Blanca with this exclusive new development in Calpe. This complex offers 55 modern 1, 2 and 3 bedroom flats, designed to offer the perfect balance between elegance, comfort and functionality. Located just 400 metres from the Arenal-Bol beach and the emblematic Peñón de Ifach, these flats combine a privileged location with luxury facilities, ideal for both permanent residence and investment. Premium Facilities for an Exclusive Lifestyle This development redefines Mediterranean luxury, with modern communal areas designed for the well-being and comfort of its residents: Rooftop infinity pool with breathtaking panoramic views. Gym and spa for maximum comfort. Coworking area, ideal for balancing work and relaxation. Optional underground parking and storage rooms. High quality finishes and avant-garde design. Each flat has been built with top quality materials and offers exceptional features: Large private terraces, many with sea views. Armoured front door for added security. Kitchen equipped with BOSCH appliances or equivalent: induction hob with extractor fan, oven, microwave and dishwasher. Ducted air conditioning with heat pump (hot/cold). Aerothermal system for efficient domestic hot water. Aluminium exterior carpentry with double glazing. Strategic location in Calpe Calpe is a vibrant destination in the Marina Alta, with an exceptional climate that offers more than 300 days of sunshine a year. Its combination of history, nature and modernity makes it an ideal place to live or invest. It also has excellent road connections via the AP-7 and the N-332, providing easy access to other coastal towns and nearby airports. Distances to Points of Interest Arenal-Bol beach - 400 m (3 minutes walk). Cantal del Roig Beach - 600 m (4 minutes walk). Calpe Port - 1 km (15 minutes walk). Peñón de Ifach Natural Park - 1 km (15 minutes walk). Baños de la Reina (natural area) - 600 m (4 minutes walk). Las Salinas - 600 m (4 minutes walk). Shopping centre and supermarkets - 500 m (4 minutes walk). Alicante Airport - 75 km (1 hour drive). Valencia Airport - 125 km (1 hour and 20 minutes drive). A Secure Investment in a Dream Destination Whether as a permanent home, second home or investment, this development represents a unique opportunity in one of the most attractive locations on the Costa Blanca. Don't miss the opportunity to purchase your luxury flat in Calpe. Contact us today for more information and viewings!